

DEKALB PUBLIC LIBRARY
DUNWOODY BRANCH LIBRARY
ADDENDUM #1

TO: Prospective Bidders

This Addendum forms a part of the Contract Documents and modifies the original Bidding Documents dated December 19, 2017. Acknowledge receipt of this Addendum in the space provided on the Bid Form. Failure to do so may subject Bidder to disqualification.

This Addendum consists of responses to contractor questions.

ADDENDUM NO. 1

Pre-Bid Conference Questions

1. Question: Will there be a public bid opening?
 - A. Answer: No. The bid tabulation will be posted on the library website.
2. Question: Is a bid bond required?
 - A. Answer: No.
3. Question: The bid form indicates the contractor is to provide the construction duration. Does the library have a goal for completion?
 - A. Answer: The library would like the space complete as soon as possible but in the most cost-effective method. The library will mainly remain open during construction but has the flexibility to close for short periods if planned in advance with the library. The calendar should include submittals, ordering and getting materials on site as much as possible prior to beginning construction.
4. Question: The undercabinet light fixture is not specified. Please provide product information.
 - A. Answer: Cut sheet is attached.
5. Question: Where can the dumpster be located?
 - A. Answer: The dumpster will be located at the staff entry loading dock.
6. Question: Are there existing drawings available?
 - A. Answer: Yes, they will be posted to the website with this addendum.
7. Question: Who will permit the drawings?

DEKALB PUBLIC LIBRARY
DUNWOODY BRANCH LIBRARY
ADDENDUM #1

A. Answer: The city of Dunwoody. Fees will apply.

8. Substitution requests:

A. A light fixture substitution request was submitted and approved. Cut sheets are attached.

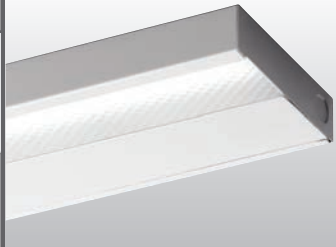
Sign in sheet attached.

END OF ADDENDA

SOLID FRONT UNDER CABINET LIGHT

1SF

LED



- ### FEATURES
- ▶ Small profile allows inconspicuous placement in confined spaces.
 - ▶ Provides uniform, glare-free task lighting.
 - ▶ Housing keyhole slots and knockouts provide quick and easy installation.
 - ▶ Individual or continuous row mounting.
 - ▶ All-welded construction provides long lasting performance.
 - ▶ Optional anti-microbial white finish available for use in healthcare applications.
 - ▶ This fixture is proudly made in the USA.

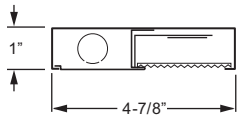
CATALOG #: _____ TYPE: _____

PROJECT: _____ NOTES: _____

EXAMPLE **1SF - 4 - L24/835 - AF12125 - OPTIONS - DRV - UNV**

SERIES NOMINAL LENGTH LUMEN PACKAGE CRI & CCT SHIELDING OPTIONS DRIVER VOLTAGE

CROSS SECTION



ORDERING INFORMATION

SERIES
1SF Solid Front Under Cabinet Light

NOMINAL LENGTH

1	1'
2	2'
3	3'
4	4'

LED PACKAGE

EXAMPLE: L24/840			AVERAGE SYSTEM WATTAGE
LUMEN PACKAGE	NOMINAL LUMENS	MINIMUM CRI & CCT	
1'			
L6	600	830 = 82 CRI, 3000K 835 = 82 CRI, 3500K 840 = 82 CRI, 4000K	8
2'			
L12	1,200		14
3'			
L18	1,800		21
4'			
L24	2,400		29

Nominal lumen output based on 3500 CCT. Actual lumens may vary +/-5%, see individual photometric reports.

SHIELDING
DMA Diffuse matte acrylic, .080" thick
AF12125 Frosted acrylic, pattern #12, .125" thick

OPTIONS
 Not available with EM option.
 See back for details.
GCO Grounded convenience outlet (120V only; not available with 1' fixture)
C&P/120 6-1/2' cord and plug, NEMA 5-15P (120V only)
WRS/120 White rocker switch (120V only; not available with 1' fixture)
AMW Anti-microbial white finish
OCCUPANCY SENSOR
 Factory-installed, passive infrared sensor (120V or 277V only).
OCCLV OSF10-10W Occupancy sensor (3' and 4' fixtures only)

DRIVER
DRV Driver prewired for non-dimming applications
DIM 10% dimming driver prewired for 0-10V low voltage applications

VOLTAGE
120 120V
277 277V
UNV 120-277V



SPECIFICATIONS

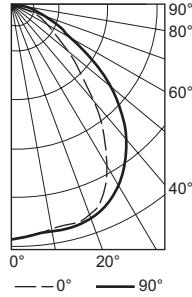
Housing – 20-gauge die-formed, welded C.R.S.
Shielding – Diffuse matte acrylic, .080" thick
Finish – 92% minimum average reflective white polyester powder coat bonded to phosphate-free, multi-stage pretreated metal. All parts painted after fabrication to facilitate installation, increase efficiency, and inhibit corrosion.
Electrical – High quality mid-power LED board(s). L85 at 50,000 hours. 25°C maximum ambient operating temperature.
Mounting – Surface.
Labels – cCSAus certified as luminaire suitable for dry or damp locations.
Warranty – 5-year limited warranty, see hew.com/warranty.

IMPORTANT:
 Electrostatic sensitive unit. Observe precautions when handling.

PHOTOMETRY

TEST REPORT INFORMATION

- ▶ Date: 08/07/14
- ▶ Lamp Type: LED
- ▶ **Rated Lumens: 2424**
- ▶ **Watts: 29**
- ▶ **Lumens Per Watt: 83.6**
- ▶ **CRI: 82**
- ▶ **CCT: 3500K**



CANDLEPOWER DISTRIBUTION

Vertical Angle	Horizontal Angle			Zonal Lumens
	0°	45°	90°	
0°	1079.	1079.	1079.	101.8
10°	1047.	1051.	1062.	101.8
20°	1034.	1045.	1051.	297.3
30°	876.	935.	978.	457.5
40°	590.	712.	821.	515.4
50°	341.	454.	599.	453.2
60°	184.	232.	336.	318.3
70°	92.	103.	138.	176.9
80°	50.	50.	50.	84.3
90°	17.	18.	10.	35.8

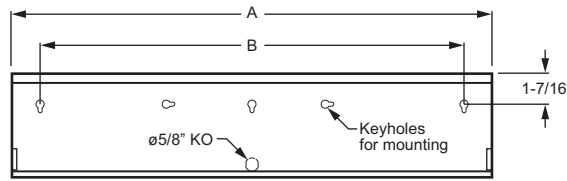
LUMEN SUMMARY

Zone	Lumens	% Fixture
0° - 30°	857.	35.1
0° - 40°	1372.	56.2
0° - 60°	2144.	87.8
0° - 90°	2440.	100.0
Total Luminaire:		
0° - 180°	2440.	100.0

IES Spacing Criteria: End = 1.2
 Diagonal = 1.3
 Across = 1.3

FIXTURE DETAILS

BACK VIEW



Back of housing provided with adequate keyhole slots and knockout for mounting and wiring.

NOMINAL LENGTH	DIMENSION	
	A	B
1'	12-1/8"	7-1/2"
2'	22-5/8"	20"
3'	34-3/8"	29"
4'	46-1/4"	38"

